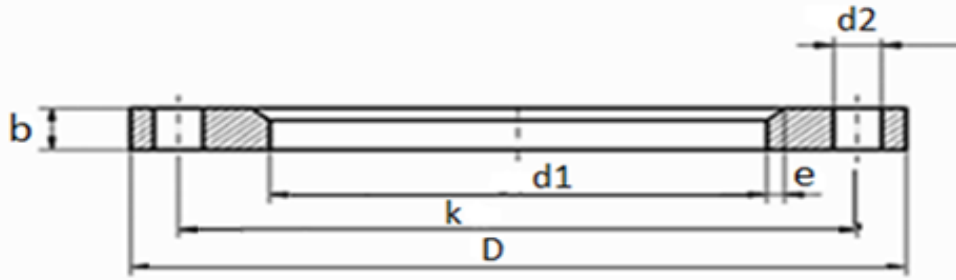


# EN 1092-1 TYPE 02 PN10



DN	D	k	b	d1	d2	e (45°)	Thread	Number of drills	Weight Kg
200	340	295	24	226	22	6	M20	8	8,947
250	395	350	26	281	22	8	M20	12	11,387
300	445	400	26	333	22	8	M20	12	12,997
350	505	460	30	365	22	8	M20	16	21,032
400	565	515	32	416	26	8	M24	16	26,623

**DN15-DN150: DIMENSIONS IDENTICAL WITH PN16**