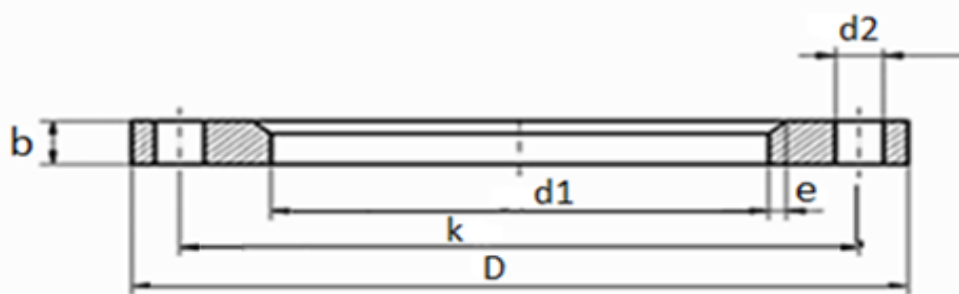


# EN 1092-1 TYPE 02 PN16



DN	D	k	b	d1	d2	e (45°)	Thread	Number of drills	Weight Kg
15	95	65	14	25	14	3	M12	4	0,655
20	105	75	16	31	14	4	M12	4	0,913
25	115	85	16	38	14	4	M12	4	1,081
32	140	100	18	47	18	5	M16	4	1,781
40	150	110	18	53	18	5	M16	4	2,035
50	165	125	20	65	18	5	M16	4	2,668
65	185	145	20	81	18	6	M16	4	3,241
80	200	160	20	94	18	6	M16	8	3,512
100	220	180	22	120	18	6	M16	8	4,247
125	250	210	22	145	18	6	M16	8	5,258
150	285	240	24	174	22	6	M20	8	6,945
200	340	295	26	226	22	6	M20	12	9,383
250	405	355	29	281	26	8	M24	12	13,717
300	460	410	32	333	26	8	M24	12	18,213
350	520	470	35	365	26	8	M24	16	27,184
400	580	525	38	416	30	8	M27	16	34,789