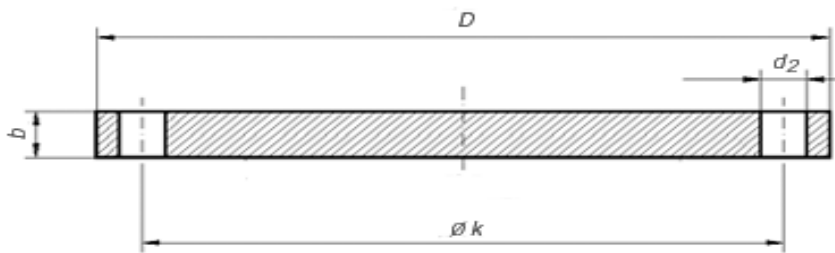


EN 1092-1 TYPE 05 PN16



| DN | k | D | b | d2 | Thread | Number of drills | Weight kg |
|-----|-----|-----|----|----|--------|------------------|-----------|
| 15 | 65 | 95 | 16 | 14 | M12 | 4 | 0,813 |
| 20 | 75 | 105 | 18 | 14 | M12 | 4 | 1,136 |
| 25 | 85 | 115 | 18 | 14 | M12 | 4 | 1,380 |
| 32 | 100 | 140 | 18 | 18 | M16 | 4 | 2,030 |
| 40 | 110 | 150 | 18 | 18 | M16 | 4 | 2,352 |
| 50 | 125 | 165 | 18 | 18 | M16 | 4 | 2,876 |
| 65 | 145 | 185 | 18 | 18 | M16 | 4 | 3,653 |
| 80 | 160 | 200 | 20 | 18 | M16 | 8 | 4,610 |
| 100 | 180 | 220 | 20 | 18 | M16 | 8 | 5,646 |
| 125 | 210 | 250 | 22 | 18 | M16 | 8 | 8,122 |
| 150 | 240 | 285 | 22 | 22 | M20 | 8 | 10,487 |
| 200 | 295 | 340 | 24 | 22 | M20 | 12 | 16,238 |
| 250 | 355 | 405 | 26 | 26 | M24 | 12 | 24,980 |
| 300 | 410 | 460 | 28 | 26 | M24 | 12 | 35,110 |
| 350 | 470 | 520 | 30 | 26 | M24 | 16 | 47,989 |
| 400 | 525 | 580 | 32 | 30 | M27 | 16 | 63,496 |
| 450 | 585 | 640 | 40 | 30 | M27 | 20 | 96,525 |
| 500 | 650 | 715 | 44 | 33 | M30 | 20 | 132,708 |
| 600 | 770 | 840 | 54 | 36 | M33 | 20 | 226,171 |