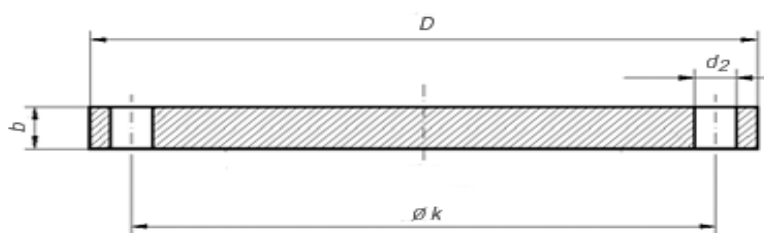


EN 1092-1 TYPE 05 PN6



| DN | k | D | b | d2 | Thread | Number of drills | Weight kg |
|-----|-----|-----|----|----|--------|------------------|-----------|
| 15 | 55 | 80 | 12 | 11 | M10 | 4 | 0,437 |
| 20 | 65 | 90 | 14 | 11 | M10 | 4 | 0,657 |
| 25 | 75 | 100 | 14 | 11 | M10 | 4 | 0,821 |
| 32 | 90 | 120 | 14 | 14 | M12 | 4 | 1,175 |
| 40 | 100 | 130 | 14 | 14 | M12 | 4 | 1,390 |
| 50 | 110 | 140 | 14 | 14 | M12 | 4 | 1,623 |
| 65 | 130 | 160 | 14 | 14 | M12 | 4 | 2,141 |
| 80 | 150 | 190 | 16 | 18 | M16 | 4 | 3,432 |
| 100 | 170 | 210 | 16 | 18 | M16 | 4 | 4,220 |
| 125 | 200 | 240 | 18 | 18 | M16 | 8 | 6,102 |
| 150 | 225 | 265 | 18 | 18 | M16 | 8 | 7,502 |
| 200 | 280 | 320 | 20 | 18 | M16 | 8 | 12,301 |
| 250 | 335 | 375 | 22 | 18 | M16 | 12 | 18,537 |
| 300 | 395 | 440 | 22 | 22 | M20 | 12 | 25,459 |
| 350 | 445 | 490 | 22 | 22 | M20 | 12 | 31,763 |
| 400 | 495 | 540 | 22 | 22 | M20 | 16 | 38,482 |
| 450 | 550 | 595 | 24 | 22 | M20 | 16 | 51,213 |
| 500 | 600 | 645 | 24 | 22 | M20 | 20 | 60,096 |