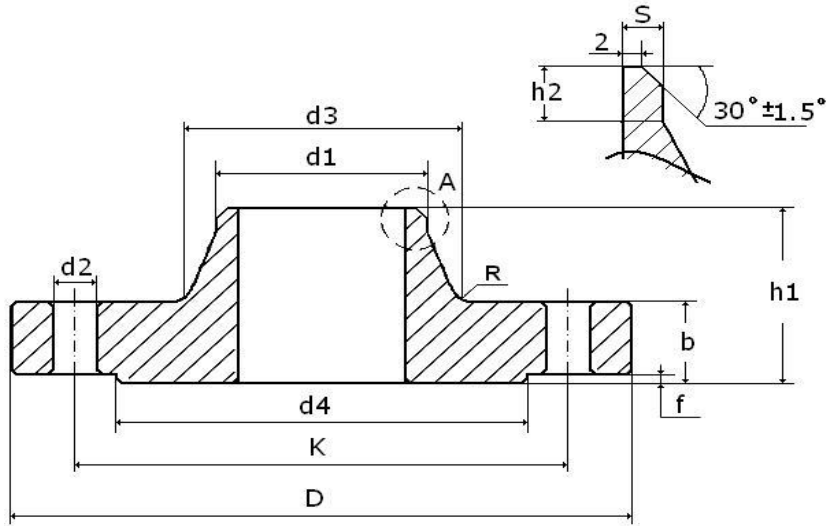


# EN 1092-1 TYPE 11 PN10



Pipe		Flange				Neck				Raised face		Screws		Weight of a flange	
DN	$d_1$	$D$	$b$	$k$	$h_1$	$d_3$	$s$	$r$	$h_2$	$d_4$	$f$	No.holes	Thread	$d_2$	Kg
200	219,1	340	24	295	62	234	6,30	10	16	268	3	8	M20	22	11,600
250	273,0	395	26	350	68	292	6,30	12	16	320	3	12	M20	22	15,800
300	323,9	445	26	400	68	342	7,10	12	16	370	4	12	M20	22	18,300
350	355,6	505	26	460	68	385	7,10	12	16	430	4	16	M20	22	25,300
400	406,4	565	26	515	72	440	7,10	12	16	482	4	16	M24	26	30,600
450	457,0	615	28	565	72	488	7,10	12	16	532	4	20	M24	26	35,100
500	508,0	670	28	620	75	542	7,10	12	16	585	4	20	M24	26	40,500
600	610,0	780	30	725	82	642	8,00	12	18	685	5	20	M27	30	52,900
<b>DN15-DN150: DIMENSIONS IDENTICAL WITH PN16</b>															