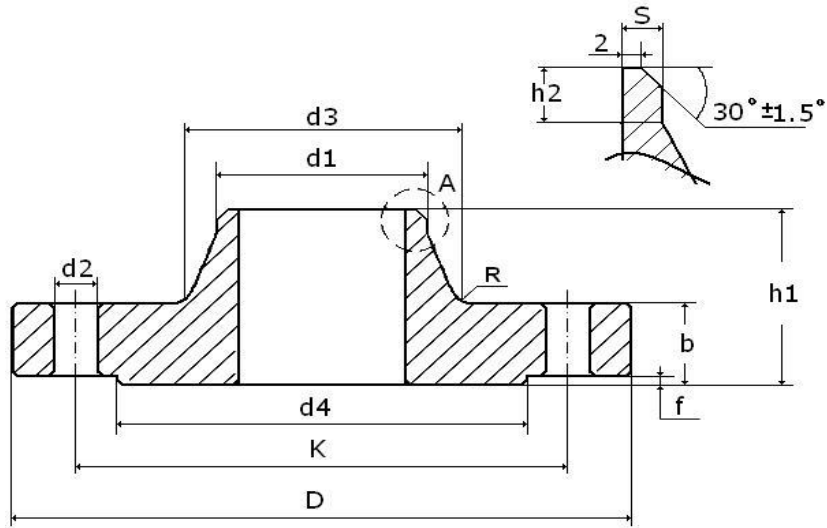


EN 1092-1 TYPE 11 PN16 (DIN HOLE)



Pipe		Flange				Neck				Raised face		Screws			Weight of a flange
DN	d1	D	b	k	h1	d3	s	r	h2	d4	f	No.holes	Thread	d2	Kg
100	108,0	220	20	180	52	125	3,6	8	12	158	3	8	M16	18	4,620
125	133,0	250	22	210	55	150	4,0	8	12	188	3	8	M16	18	6,300
150	159,0	285	22	240	55	175	4,5	10	12	212	3	8	M20	22	7,750