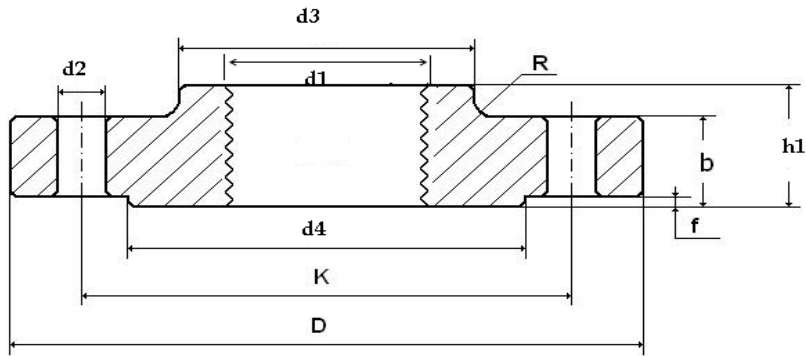


EN 1092-1 TYPE 13 PN16



| DN | \varnothing | d_1 | d_4 | d_3 | f | K | D | b | d_2 | h_1 | R | Thread | Number of drills | Weight kg |
|-----|---------------|-------|-------|-------|-----|-----|-----|-----|-------|-------|-----|--------|------------------|-----------|
| 15 | Rp 1/2" | 21,3 | 45,0 | 35,0 | 2,0 | 65 | 95 | 16 | 14 | 22 | 4 | M12 | 4 | 0,722 |
| 20 | Rp 3/4" | 26,9 | 58,0 | 45,0 | 2,0 | 75 | 105 | 18 | 14 | 26 | 4 | M12 | 4 | 1,040 |
| 25 | Rp 1" | 33,7 | 68,0 | 52,0 | 2,0 | 85 | 115 | 18 | 14 | 28 | 4 | M12 | 4 | 1,250 |
| 32 | Rp 1-1/4" | 42,4 | 78,0 | 60,0 | 2,0 | 100 | 140 | 18 | 18 | 30 | 6 | M16 | 4 | 1,810 |
| 40 | Rp 1-1/2" | 48,3 | 88,0 | 70,0 | 3,0 | 110 | 150 | 18 | 18 | 32 | 6 | M16 | 4 | 2,060 |
| 50 | Rp 2" | 60,3 | 102,0 | 84,0 | 3,0 | 125 | 165 | 18 | 18 | 28 | 6 | M16 | 4 | 2,430 |
| 65 | Rp 2-1/2" | 76,1 | 122,0 | 104,0 | 3,0 | 145 | 185 | 18 | 18 | 32 | 6 | M16 | 4 | 3,180 |
| 65 | Rp 2-1/2" | 76,1 | 122,0 | 104,0 | 3,0 | 145 | 185 | 18 | 18 | 32 | 6 | M16 | 8 | 2,970 |
| 80 | Rp 3" | 88,9 | 138,0 | 118,0 | 3,0 | 160 | 200 | 20 | 18 | 34 | 6 | M16 | 8 | 4,120 |
| 100 | Rp 4" | 114,3 | 158,0 | 140,0 | 3,0 | 180 | 220 | 20 | 18 | 40 | 8 | M16 | 8 | 4,470 |
| 125 | Rp 5" | 139,7 | 188,0 | 168,0 | 3,0 | 210 | 250 | 22 | 18 | 44 | 8 | M16 | 8 | 6,130 |
| 150 | Rp 6" | 168,3 | 212,0 | 195,0 | 3,0 | 240 | 285 | 22 | 22 | 44 | 10 | M20 | 8 | 7,920 |