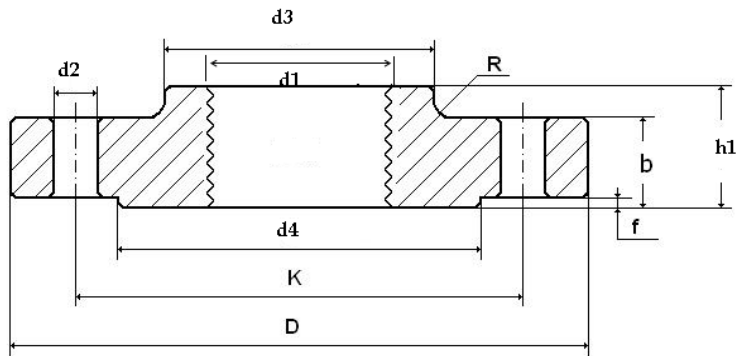


EN 1092-1 TYPE 13 PN6



DN	\emptyset	d	g	m	f	k	D	b	l	h	r	Thread	Number of drills	Weight kg
25	Rp 1"	33,7	60,0	50,0	2,0	75	100	14	11	24	4	M10	4	0,729
32	Rp 1-1/4"	42,4	70,0	60,0	2,0	90	120	14	14	26	6	M12	4	1,040
40	Rp 1-1/2"	48,3	80,0	70,0	3,0	100	130	14	14	26	6	M12	4	1,200
50	Rp 2"	60,3	90,0	80,0	3,0	110	140	14	14	28	6	M12	4	1,340
65	Rp 2-1/2"	76,1	110,0	100,0	3,0	130	160	14	14	32	6	M12	4	1,830
80	Rp 3"	88,9	128,0	110,0	3,0	150	190	16	18	34	8	M16	4	2,750
100	Rp 4"	114,3	148,0	130,0	3,0	170	210	16	18	40	8	M16	4	3,010